



# 3G /4G LTE / 5G Outdoor External Antenna

ANOR5G10WT



## INTRODUCTION

Thank you for choosing our 5G high gain directional external antenna. This antenna is designed to enhance the performance and signal strength of your 5G-enabled devices. Please read this manual carefully before installing and using the antenna to ensure optimal performance. Compact and stylish housing, it can be accompany with your cpe and sim card router or Cell Phone Signal Boosters.

## Technical Specifications:

- Covered Services: 3G / 4G / 4G LTE / 5G
- Frequency: 698 - 960 MHz / 1710 - 2700 MHz / 3300 - 3600 MHz / 4800 - 5000 MHz
- Gain: 10 / 11  $\pm$  1 dBi
- High Directionality
- Cable fixed at antenna RG58U 1 ft N-type connector
- 4,0m LMR200 cable fixed on the antenna with a SMA-male connector
- Anti-UV housing
- Pole installations method

## PACKAGE CONTENT

Please check the content before your installation

1. Antenna x 1 pc
2. LMR 200 cable x 1 pc
3. Installation materials
4. Manual 1x

## Installation

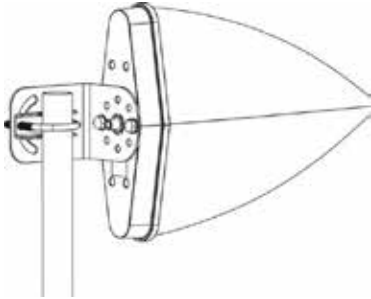
**Step 1.** Read this manual, ideally from start to finish, so that you understand the whole Installation process before you begin.

**Step 2.** Choose a suitable location for antenna installation with a clear line of sight to the 4G LTE or 5G cellular towers. Use the provided mounting kit to secure the antenna. Ensure a stable and secure mount to prevent movement or damage. For optimal performance, it is recommended to install the antenna outdoors.

**Step 3.** Locate a wooden pole or metallic pole where you would like to fix the antenna.

**Step 4.** Fix the antenna to the pole by using the mounting material, then secure the antenna by tightening the U-Bolt with the butterfly screws

**Step 5.** Connect the SMA-Male connector of the LMR200 coaxial cable on the antenna to the 4G or 5G device's antenna port. The device could be a 4G LTE or 5G CPE (Customer Premises Equipment), SIM card router, or cell phone Singla Boosters. Ensure a secure connection to minimize signal loss.



**Step 6.** Adjust the antenna direction for maximum signal strength. Use a compass or refer to your device's signal strength indicator to find the optimal direction. Gradually adjust the antenna angle and direction, checking the signal strength periodically. Ensure a secure and snug connection to minimize signal loss.

## Maintenance and Care:

Regularly inspect the antenna for any signs of damage, corrosion, or loose connections.

## Troubleshooting:

If experiencing signal issues, recheck the antenna connection and directional alignment. Ensure there are no obstructions blocking the antenna's line of sight to the cellular tower .

## Compliance and Safety Guidelines:

Comply with local regulations and safety standards during installation.

Do not attempt to modify or disassemble the antenna.

Ensure that the installation location is safe and secure.

Thank you for choosing our 5G Outdoor Antenna. Enjoy enhanced 5G connectivity!